

PUBLIC SCHOOLS of
BROOKLINE



Superintendent Report

May 12, 2022

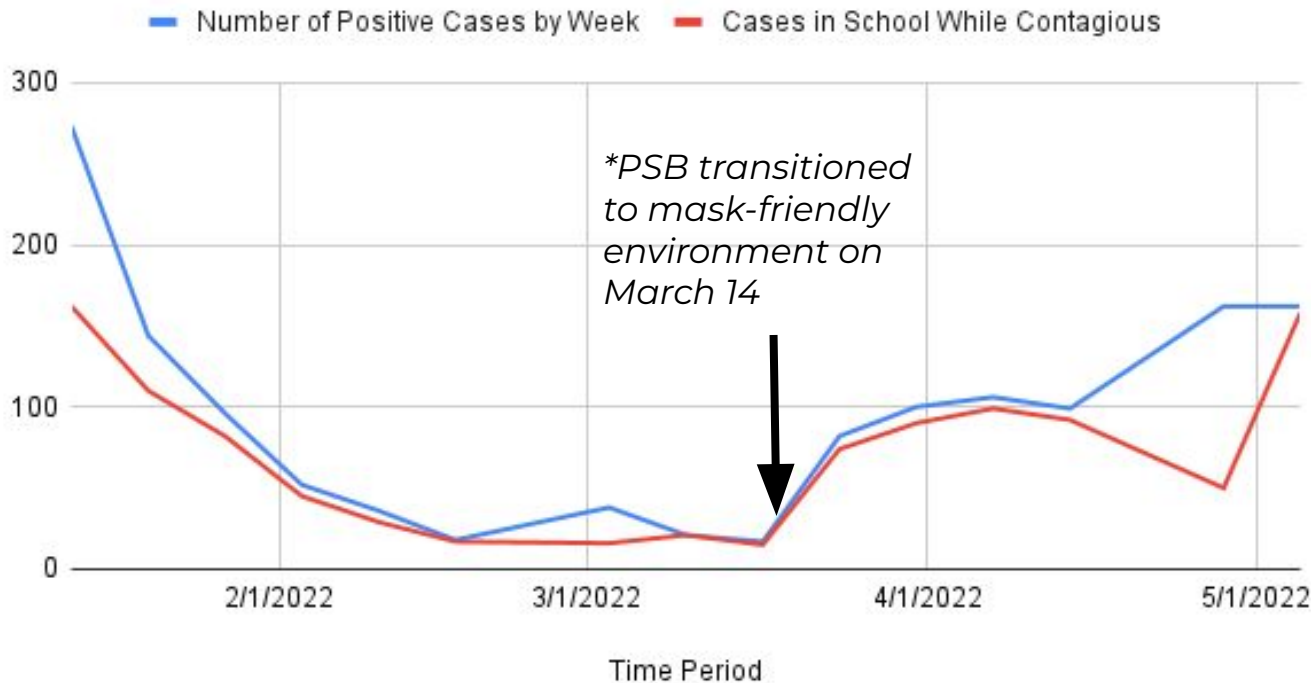
Agenda



- COVID-19 Update
- School Visits
- 2022-23 Enrollment Survey
- Educator Appreciation Week & Nurse's Day
- Asian American Pacific Islander (AAPI) Heritage Month
- Community Engagement
- Spotlight on Excellence

COVID-19 Update

PSB COVID-19 Dashboard, 1/13/22 - Present



Week	# of Cases
3/10/2022	21
3/17/2022	17
3/24/2022	82
3/31/2022	100
4/7/2022	106
4/14/2022	99
4/28/2022	162
5/5/2022	162

COVID-19 Update

Changes in Health Protocols, effective 5/12:

Masks are now **strongly encouraged** for **ALL INDIVIDUALS** during indoor settings (e.g. classrooms, buses, etc.)

Change in Health Protocols, effective 4/1:

Masks are now **required** for:

- Individuals returning from COVID isolation
- Fully Vaccinated individuals who have a close contact at home
- Individuals who are symptomatic at school but test negative for COVID.

Changes in Health Protocols, effective 5/12:

Masks are now **strongly encouraged** for **ALL INDIVIDUALS** during indoor settings (e.g. classrooms, buses, etc.)



Superintendent School Visits

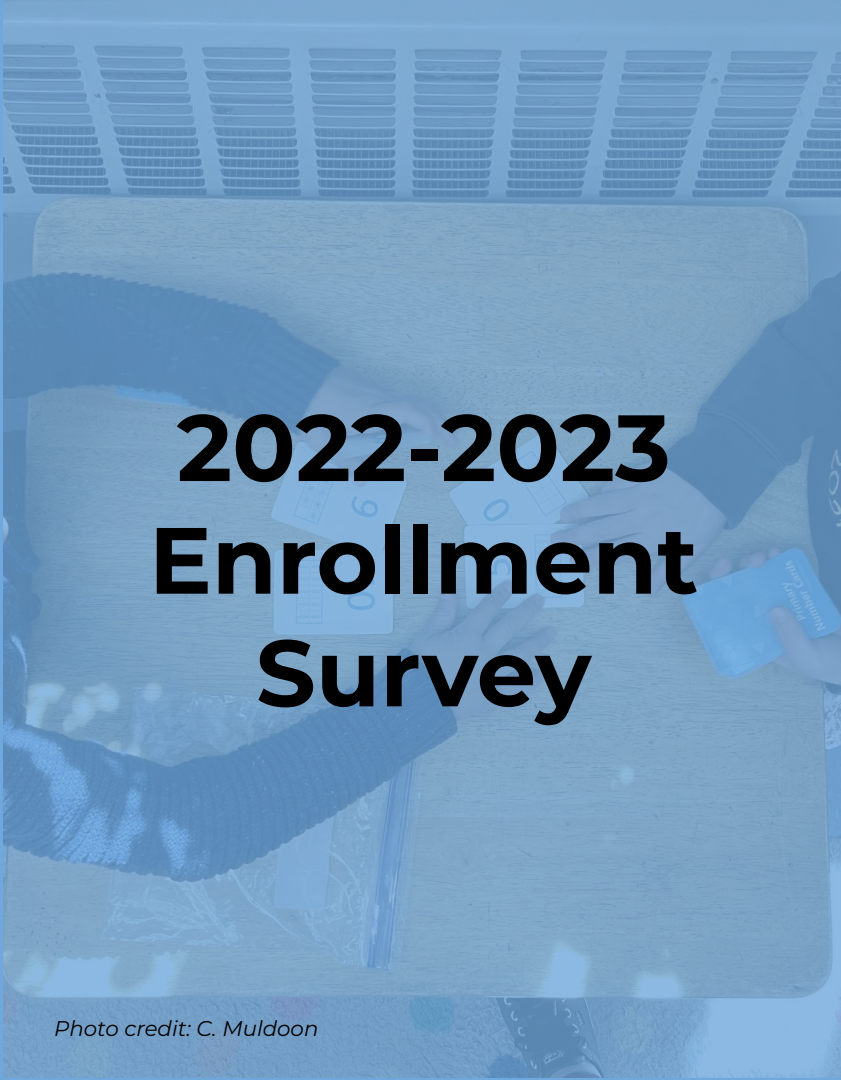
Photo credit: R. Watts

Recently completed:

- Heath (4/28)
- Baker (4/29)
- Ridley (4/29)
- Lawrence (5/2)
- Runkle (5/5)
- BHS (5/5)
- BEEP Lynch (5/6)

Upcoming:

Final visits of the 2021-22 school year in June.



2022-2023 Enrollment Survey

Photo credit: C. Muldoon

On **Friday, May 6**, the Office of Strategy and Performance sent out an enrollment survey to all PSB families requesting more information on their enrollment status for the 22-23 school year. **The survey will close at the end of May.**

PSB Staff Appreciation

Parents and guardians across the district took the time to show their appreciation for our educators last week during **Educator Appreciation Week!**

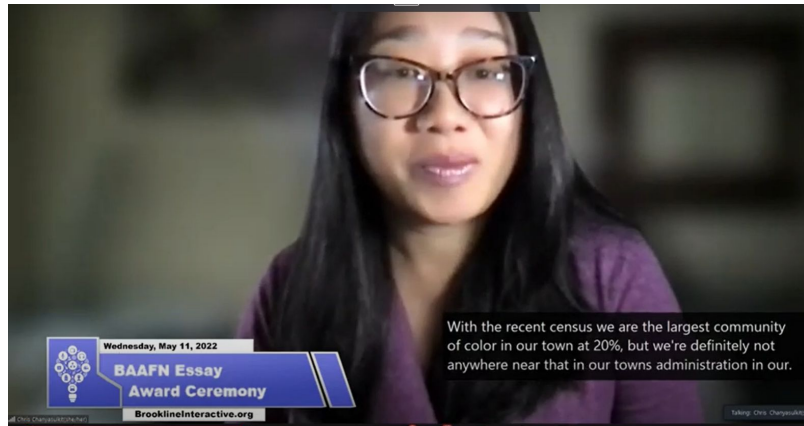


The celebration continued on Wednesday, May 11 in recognition of **School Nurses Day!**



Asian American Pacific Islander (AAPI) Heritage Month!

PSB is excited to observe May as **Asian American Pacific Islander (AAPI) Heritage Month!** While these celebrations and recognitions can and should take place throughout our school year, it is also important to recognize the importance of this month.



The Brookline Asian-American Family Network celebrated their 7th annual essay contest on **Wednesday, May 11**.



BHS students Sam Lee and Jean Hur also debuted their documentary "What Does It Mean to be Asian American at BHS?"

Community Engagement

**4/28: BHS
Innovation Fund
Gala**



**4/29: Runkle Math
and Science Night**



**5/1: Baker Bulldog
Trot-a-Thon**



**5/4: PSB
Participates in
Walk, Bike, Bus and
Roll to School Day**



Community Engagement

**5/5: Brookline
Teen Center
Fundraiser**



**5/5: Runkle
students
releasing their
trout into
Jamaica Pond
as part of the
Life Cycle unit**



**5/10: BEF
Celebrating
Teachers Reception**



**5/12: BHS Day
of Racial
Reform and
Solidarity**



PUBLIC SCHOOLS of
BROOKLINE

Spotlight on Excellence

METCO's CORE Program

